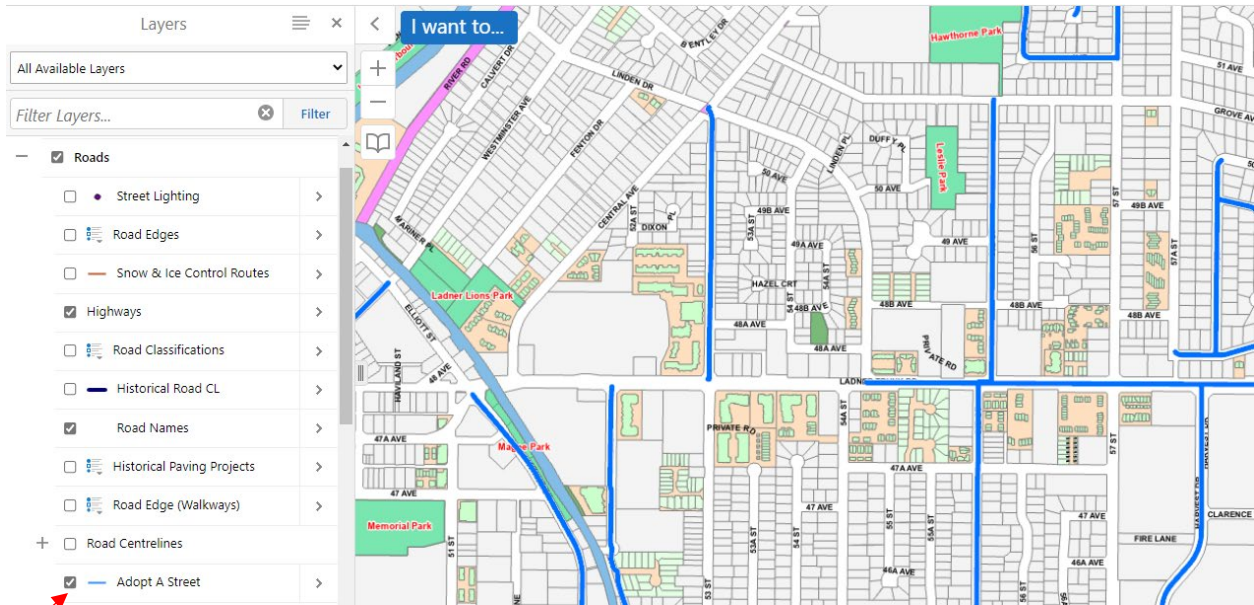


Adopt A Street Delta Map Layer

Type in “Delta Map” on the in the search box on the Delta’s website, www.delta.ca

Open Delta Map and checkmark “adopt a street layer” under the Roads Layer.

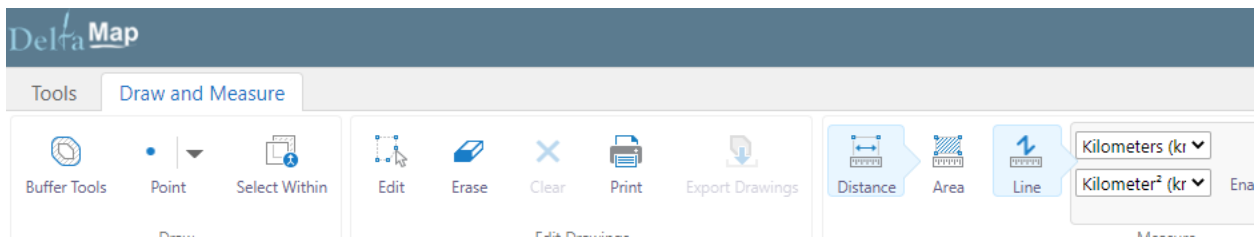
Lines in Blue will indicate streets that are currently adopted.



1 KM Requirement Measurement

To see if your street/area you want to adopt meets the 1 KM requirement, measure by using the measuring tool in Delta map.

Click on the Draw and Measure on the top ribbon on Delta Map – seen below.



To measure straight road, double click on the Road or spot on the map and drag to end of the road/intersection (click the mouse again to turn at an intersection). To stop your measurement, double click on the mouse.

Total measurements will show on the road you just measured.

